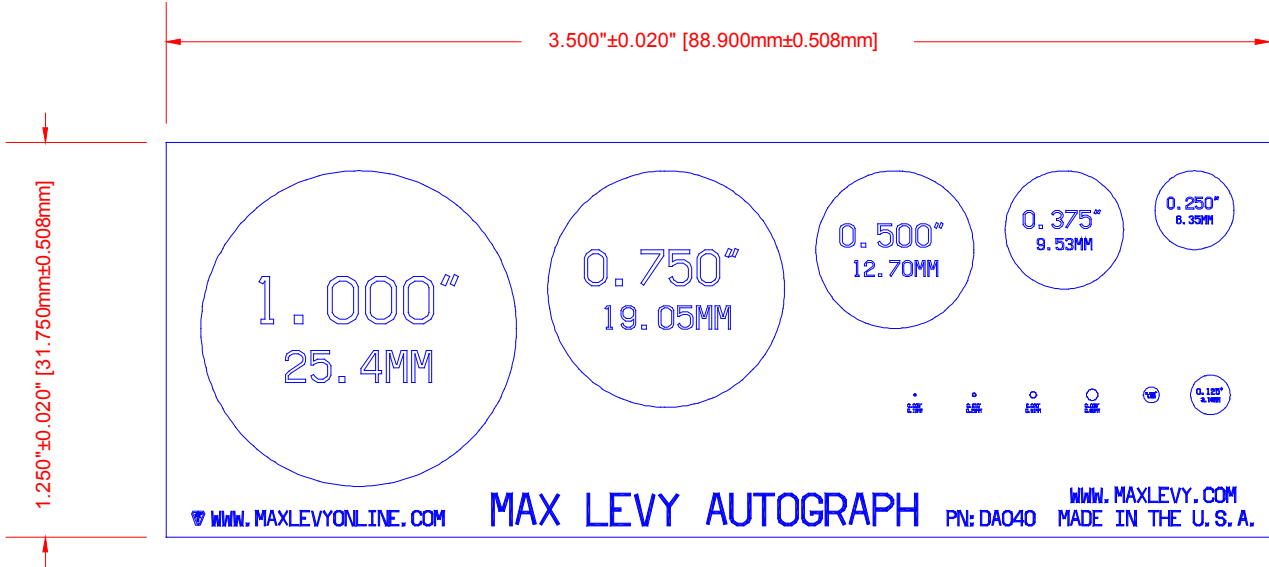


MAX LEVY AUTOGRAPH, INC. PROPRIETARY

THIS DRAWING CONTAINS CONFIDENTIAL PROPRIETARY INFORMATION THAT IS MAX LEVY AUTOGRAPH, INC. PROPERTY. DO NOT DISCLOSE NOR DUPLICATE FOR OTHERS EXCEPT AS AUTHORIZED BY MAX LEVY AUTOGRAPH, INC.

DATE	SYM	REVISION RECORD	AUTH	DR	CK

1. MATERIAL: 1.5MM NOMINAL THICK SODA LIME GLASS
2. FLATNESS: 3-4 WAVES / INCH.
3. SCRATCH/DIG: 20/10
4. COATING: CHROMIUM ADHESION LAYER WITH A TOP LAYER OF CHROMIUM OXIDE. COATING TO PROVIDE LOW REFLECTION LOOKING AT THE PATTERN WITH REFLECTIVITY LESS THAN FIVE PERCENT (<5%) FOR LIGHT WAVELENGTH 550nm (CENTER OF VISIBLE). A MAXIMUM FIVE (5) PINHOLES ON ANY ONE TARGET MAY BE REPAIRED WITH BLACK EPOXY INK.
5. EDGES: BREAK ALL SHARP EDGES.
6. PATTERN TO BE CENTERED ON SUBSTRATE.
7. DOT DIAMETER TOLERANCE: ±0.0001"



MLO PART NUMBER: DA040		ONLINE CATALOG RD2055	
TOLERANCES (EXCEPT AS NOTED)		MAX LEVY AUTOGRAPH	
DECIMAL .XXX= +/- .005 .XX= +/- .015 .X= +/- .030	MATERIAL SEE NOTES	SCALE NONE	DRAWN BY TEN
FRACTIONAL +/- .030	TITLE DOT DIAMETER TARGET INCH		
ANGULAR +/- 0.5Deg.	DATE 01/23/01	DRAWING NUMBER 300MLA0080-001	
APPROVED BY			