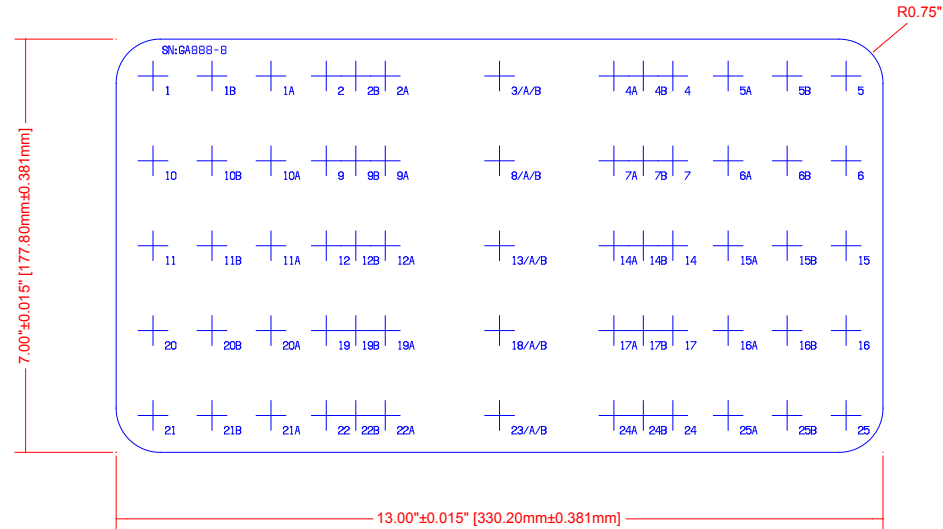


MAX LEVY AUTOGRAPH, INC. PROPRIETARY

THIS DRAWING CONTAINS CONFIDENTIAL PROPRIETARY INFORMATION THAT IS MAX LEVY AUTOGRAPH, INC. PROPERTY. DO NOT DISCLOSE TO NOR DUPLICATE FOR OTHERS EXCEPT AS AUTHORIZED BY MAX LEVY AUTOGRAPH, INC.

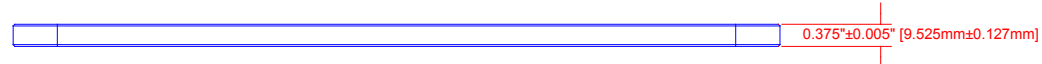
DATE	SYM	REVISION RECORD	AUTH	DR	CK



UNCONTROLLED COPY

NOTES:

1. MATERIAL: PHOTO QUALITY SODA LIME GLASS.
2. FLATNESS: 0.002"
3. PARALLELISM: 0.002"
4. BEVEL: 0.020" - 0.040"
5. SCRATCH / DIG: 60 / 40
6. COATING: CHROMIUM ADHESION LAYER WITH A TOP LAYER OF CHROMIUM OXIDE. CHROMIUM OXIDE COATING TO PROVIDE LOW REFLECTION LOOKING AT THE PATTERN WITH REFLECTIVITY LESS THAN FIVE PERCENT (<5%) FOR LIGHT WAVELENGTH 550 nm (CENTER OF VISIBLE).
7. PATTERN: 0.5" X 0.5" CROSSHAIRS, 65 TOTAL. REVERSE READING LOOKING THRU GLASS.
8. PATTERN LINEWIDTH: 0.010" ± 0.0005"
9. PATTERN SPACING:
 NUMBERS 1 THRU 25: X= 2.9375" Y= 1.4375"
 NUMBERS 1A THRU 25A: X= 1.9375" Y= 1.4375"
 NUMBERS 1B THRU 25B: X= 2.4375" Y= 1.4375"



MLO PART NUMBER: HA005		SHEET 1 OF 1		ONLINE CATALOG RD2055	
TOLERANCES (EXCEPT AS NOTED)		MAX LEVY AUTOGRAPH			
DECIMAL .XXX= +/- .005 .XX= +/- .015 .X= +/- .030	MATERIAL SEE NOTES	SCALE	DRAWN BY TEN		
FRACTIONAL +/- .030	APPROVED BY				
STAGE CALIBRATION RETICLE / 65 POINT					
ANGULAR +/- 0.5Deg.	DATE 08/30/01	DRAWING NUMBER 300MLA0082-002			