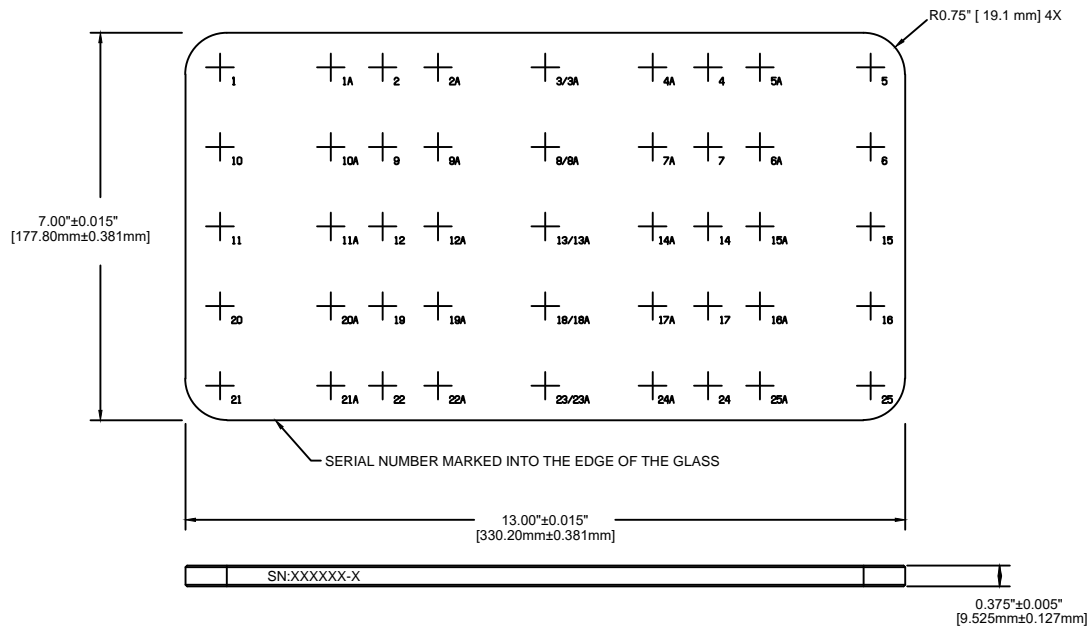


MAX LEVY AUTOGRAPH, INC. PROPRIETARY				DATE	SYM	REVISION RECORD	AUTH	DR	CK
THIS DRAWING CONTAINS CONFIDENTIAL PROPRIETARY INFORMATION THAT IS MAX LEVY AUTOGRAPH, INC. PROPERTY. DO NOT DISCLOSE TO NOR DUPLICATE FOR OTHERS EXCEPT AS AUTHORIZED BY MAX LEVY AUTOGRAPH, INC.				8/19	A	CHANGED THIN FILM	SS		CH



NOTES:

1. MATERIAL: SODA LIME GLASS.
2. FLATNESS: 0.002"
3. PARALLELISM: 0.002"
4. BEVEL: 0.020" - 0.040"
5. SCRATCH / DIG: 40 / 20 BOTH SURFACES
6. COATING: REFLECTIVE CHROMIUM FIRST SURFACE. OPTICAL DENSITY > 3.0.
COATING DESIGNED TO PROVIDE REFLECTANCE 50% ± 5% @ 500 nm.
7. PATTERN: 0.5" X 0.5" CROSSHAIRS, 45 TOTAL. RIGHT READING LOOKING AT GLASS.
8. PATTERN LINEWIDTH: 0.010" ± 0.0005
9. PATTERN SPACING:
NUMBERS 1 THRU 25: X= 2.9375" Y= 1.4375"
NUMBERS 1A THRU 25A: X= 1.9375" Y= 1.4375"
10. SERIAL NUMBER USES THE SHOP NUMBER IN THE FORMAT SN:XXXXXX-X

PART NUMBER: HA005			
TOLERANCES (EXCEPT AS NOTED)		MAX LEVY AUTOGRAPH	
DECIMAL .XXX= +/- .005 .XX= +/- .015 .X= +/- .030	MATERIAL SEE NOTES	SCALE	DRAWN BY TEN
FRACTIONAL +/- .030	APPROVED BY		
TITLE STAGE CALIBRATION RETICLE / 45 POINT			
ANGULAR +/- 0.5Deg.	DATE 08/30/01	DRAWING NUMBER 300MLA0082-001	