

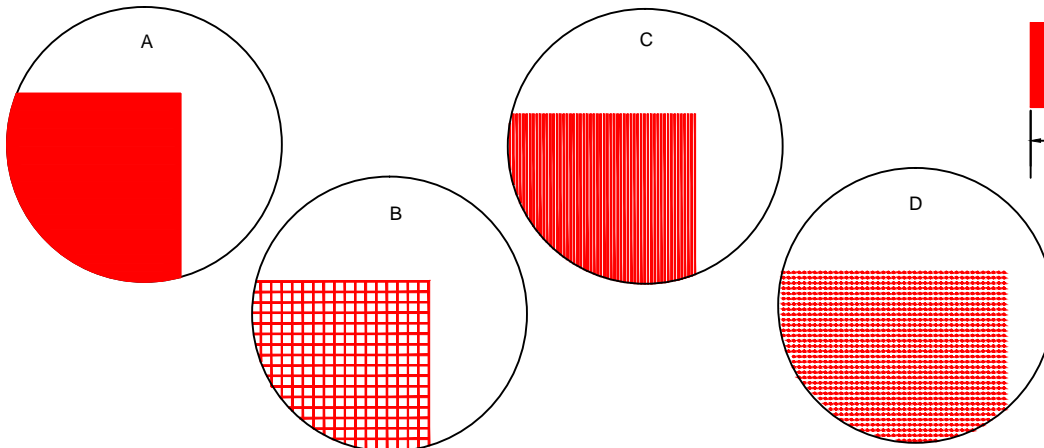
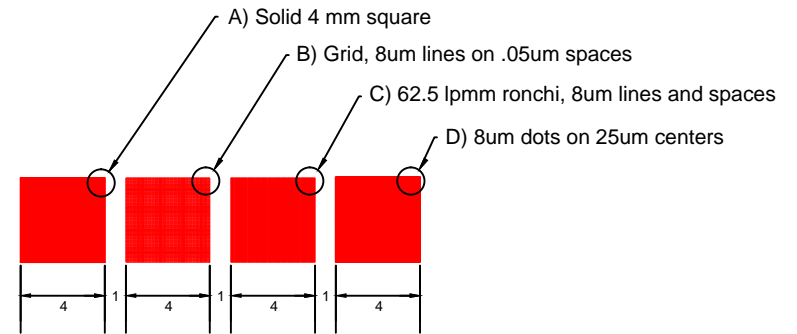
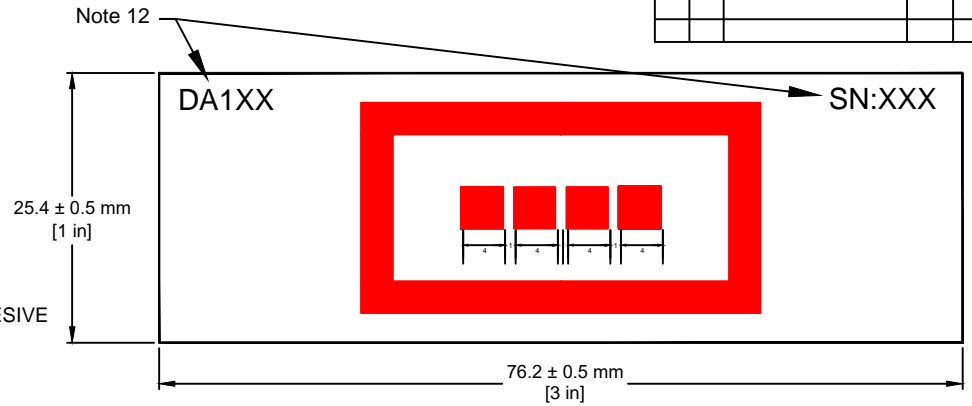
NOTES:

- EDGES: BREAK SHARP EDGES. NO VISIBLE EDGE CHIPS > 0.25 MM
- FLATNESS: 0.001" (0.0254MM)
- PARALLELISM: S1 TO S2 < 0.001" / INCH (0.254 MM / 25.4 MM)
- SURFACE QUALITY: SCRATCH:DIG 40:20
- SUBSTRATE: 0.040" (1.54 MM) NOMINAL THICK POLISHED SODA LIME GLASS
- COATING: FLORESCENT EPOXY POLYMER - SEE CHART BELOW

MLA CATALOG NUMBER	FLUORESCENT COATING	DRAWING DASH NUMBER
DA113	MLA-YE	-001
DA114	MLA-MG	-002
DA115	MLA-NIR	-003

- NO.1 PROTECTIVE COVERSLIP ATTACHED WITH 0.006" THICK OPTICAL ADHESIVE
- PATTERN TO BE CENTERED ON SUBSTRATE, ACCURATE TO ±1MM
- POLARITY: POSITIVE (FLORESCENT PATTERN ON CLEAR BACKGROUND LOOKING AT THE GLASS)
- FEATURE SIZE: WITHIN ± 0.001 MM OF LISTED SIZE
- EACH TARGET WILL INCLUDE AN N.I.S.T. TRACEABLE CERTIFICATE OF ACCURACY FOR THE MASTER PHOTOTOOL USED TO REPLICATE THE PART. CORNER TO OPPOSITE CORNER GRID ACCURACY 1.414 TIMES THE OVERALL X OR Y ACCURACY LISTED IN CHART TYPICAL DOT PATTERN ARRAY
- PART NUMBER AND SERIAL NUMBER WILL BE LASER ENGRAVED IN THE GLASS.

II-VI OPTICAL SYSTEMS					
DATE	SYM	REVISION RECORD	AUTH	DR	CK



SHEET 1 OF 2			
MM TOLERANCES (EXCEPT AS NOTED)	II-VI OPTICAL SYSTEMS		
DECIMAL XXX= +/- .127 XX= +/- .381 .X= +/- .762	MATERIAL SEE NOTES	SCALE NONE	DRAWN BY SS APPROVED BY XX
FRACTIONAL +/- .030	TITLE FLORESCENT TARGET ON SODA LIME GLASS		
ANGULAR +/- 0.5Deg.	DATE 6/4/18	DRAWING NUMBER 300MLA02XX-00X	