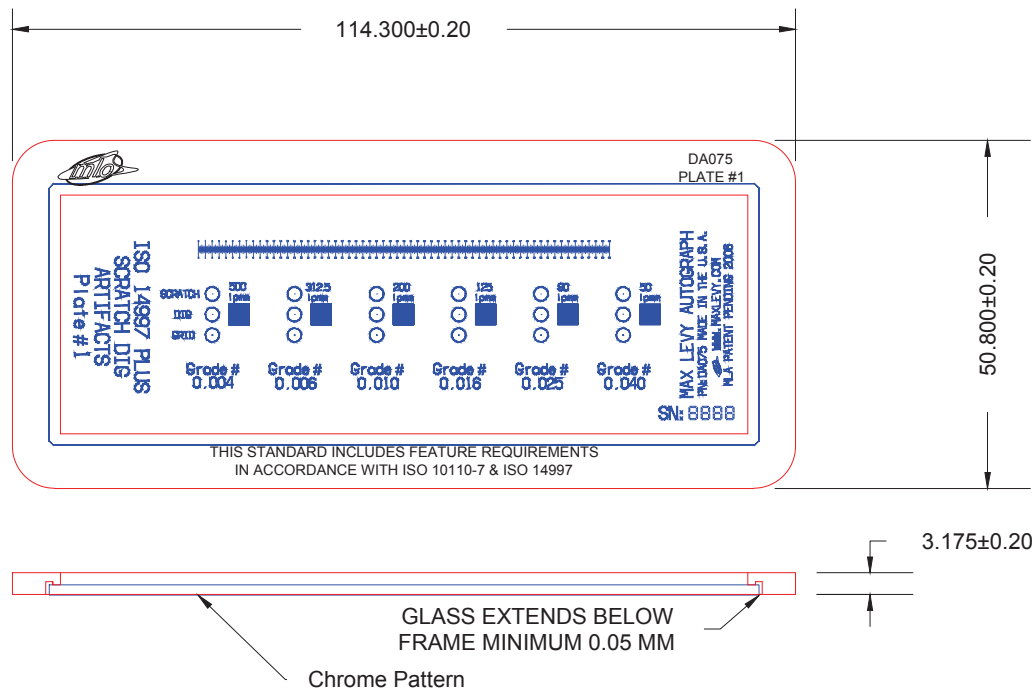


DATE	SYM	REVISION/RECORD	AUTH	DR	CK
7/12/06	A	SHRANK INSIDE WINDOW	DSR		
4/4/16	B	SEE ECO 56		DB	

- SUBSTRATE: 1.5MM NOMINAL THICK, PHOTO QUALITY SELECT SODA LIME FLOAT GLASS.  
INDEX OF REFRACTION 1.521/1.523 (589.3 NM SODIUM D LINE)
- HOLDER: 1/8" BLACK ANODIZED ALUMINUM.
- SUBSRATE FLATNESS: 3-4 WAVES / INCH.
- SURFACE QUALITY: SCRATCH:DIG 20:10 ACTIVE AREA INSIDE DELIMETER CIRCLES, 80:40 ELSEWHERE.
- COATING: CHROMIUM FIRST SURFACE. OPTICAL DENSITY ≥ 3.0.
- EDGES: BREAK ALL SHARP EDGES. NO VISIBLE EDGE CHIPS > 0.25 MM DIAMETER
- PATTERN TO BE OPAQUE FEATURES ON A CLEAR BACKGROUND.
- LINE WIDTH AND DOT DIAMETER TOLERANCE: ±0.00025 MM.  
FEATURE SIZE IS DETERMINED BY MEASURING THE TRANSMISSION OF THE 50 LPMM RULING AND COMPUTING THE LINE AND SPACE RATIO FOR THAT TRANSMISSION.  
THE MEASURED TRANSMISSION VALUE AND FEATURE SIZE WILL BE INCLUDED ON THE C OF A.
- 60 MM SCALE LENGTH TOLERANCE: ±0.004 MM
- CERTIFICATION: NIST TRACEABLE CERTIFICATE OF ACCURACY IN COMPLIANCE WITH ISO 117025 WITH PART NUMBER AND SERIAL NUMBER INCLUDED.
- ASSEMBLE WITH BLACK ENTHONE EPOXY, CURED WITH 20/A CATALYST AT ROOM TEMPERATURE.
- FEATURES ARE IN COMPLIANCE WITH BOTH ISO 10110-7 AND ISO 14997.
- LASER ENGRAVE AND ASSEMBLE PER 110MLA0091-001.

Grade Number	Diameter of Circle (microns)	Dimension of Scratch (microns)
0.004	4.5	1 x 16
0.006	7	1.6 x 25
0.010	11	2.5 x 40
0.016	18	4 x 63
0.025	28	6.3 x 100
0.040	45	10 x 160

50 LPMM LINE WIDTHS VS TRANSMISSION		
LINE	SPACE	%T
0.0095	0.0105	52.5%
0.0096	0.0104	52.0%
0.0097	0.0103	51.5%
0.0098	0.0102	51.0%
0.0099	0.0101	50.5%
0.0100	0.0100	0.50%
0.0101	0.0099	49.5%
0.0102	0.0098	49.0%
0.0103	0.0097	48.5%
0.0104	0.0096	48.0%
0.0105	0.0095	47.5%



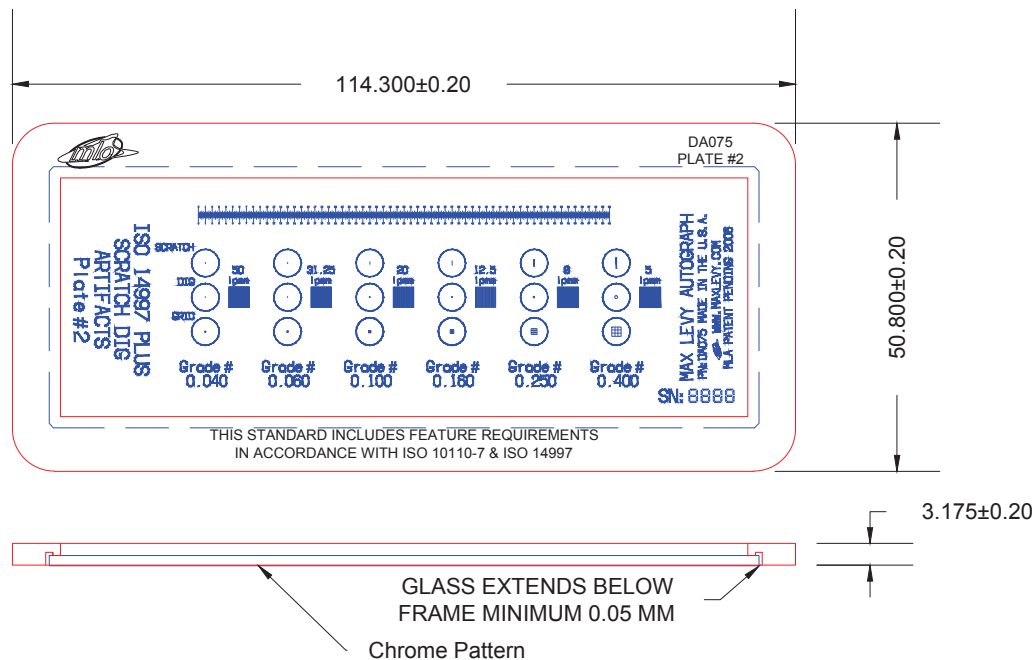
1	TARGET CD
1	PACKATEERS DIE-CUT FOAM LINED CASE
1	GLASS: 300MLA0146-001 2nd SURFACE SCRATCH DIG, PLATE #1
1	FRAME: 200MLA0307 SCRATCH DIG HOLDER
QTY	Description
JOB #	RD2071
MM TOLERANCES UNLESS SPECIFIED	MAX LEVY AUTOGRAPH
DRAWN BY	SS
APPROVED BY	D.ROLLINS
TITLE	ISO 14997 2nd SURFACE SCRATCH DIG MLA PLATE #1 ASSMBLY
DATE	10/05/06
DRAWING NUMBER	110MLA0089-005
SHEET NUMBER	1 OF 2

DATE	SYM	REVISION RECORD	AUTH	DR	CK
7/12/06	A	SHRANK INSIDE WINDOW	DSR		
4/4/16	B	SEE ECO 56		DB	

- SUBSTRATE: 1.5MM NOMINAL THICK, PHOTO QUALITY SELECT SODA LIME FLOAT GLASS.  
INDEX OF REFRACTION 1.521/1.523 (589.3 NM SODIUM D LINE)
- HOLDER: 1/8" BLACK ANODIZED ALUMINUM.
- SUBSRATE FLATNESS: 3-4 WAVES / INCH.
- SURFACE QUALITY: SCRATCH:DIG 20:10 ACTIVE AREA INSIDE DELIMETER CIRCLES, 80:40 ELSEWHERE.
- COATING: CHROMIUM FIRST SURFACE. OPTICAL DENSITY ≥ 3.0.
- EDGES: BREAK ALL SHARP EDGES. NO VISIBLE EDGE CHIPS > 0.25 MM DIAMETER
- PATTERN TO BE OPAQUE FEATURES ON A CLEAR BACKGROUND.
- LINE WIDTH AND DOT DIAMETER TOLERANCE: ±0.00025 MM.  
FEATURE SIZE IS DETERMINED BY MEASURING THE TRANSMISSION OF THE 50 LPMM RULING AND COMPUTING THE LINE AND SPACE RATIO FOR THAT TRANSMISSION.  
THE MEASURED TRANSMISSION VALUE AND FEATURE SIZE WILL BE INCLUDED ON THE C OF A.
- 60 MM SCALE LENGTH TOLERANCE: ±0.004 MM
- CERTIFICATION: NIST TRACEABLE CERTIFICATE OF ACCURACY IN COMPLIANCE WITH ISO 117025 WITH PART NUMBER AND SERIAL NUMBER INCLUDED.
- ASSEMBLE WITH BLACK ENTHONE EPOXY, CURED WITH 20/A CATALYST AT ROOM TEMPERATURE.
- FEATURES ARE IN COMPLIANCE WITH BOTH ISO 10110-7 AND ISO 14997.
- LASER ENGRAVE AND ASSEMBLE PER 110MLA0091-002.

Grade Number	Diameter of Circle (microns)	Dimension of Scratch (microns)
.040	45	10 x 160
.060	70	16 x 225
.100	110	25 x 400
.160	180	40 x 630
.250	280	63 x 1000
.400	450	100 x 1600

50 LPMM LINE WIDTHS VS TRANSMISSION		
LINE	SPACE	%T
0.0095	0.0105	52.5%
0.0096	0.0104	52.0%
0.0097	0.0103	51.5%
0.0098	0.0102	51.0%
0.0099	0.0101	50.5%
0.0100	0.0100	0.50%
0.0101	0.0099	49.5%
0.0102	0.0098	49.0%
0.0103	0.0097	48.5%
0.0104	0.0096	48.0%
0.0105	0.0095	47.5%



1	TARGET CD
1	PACKATEERS DIE-CUT FOAM LINED CASE
1	GLASS: 300MLA0146-001 2nd SURFACE SCRATCH DIG, PLATE #2
1	FRAME: 200MLA0307 SCRATCH DIG HOLDER
QTY	Description
JOB #	RD2071
MM TOLERANCES (UNLESS SPECIFIED)	MAX LEVY AUTOGRAPH
DRAWN BY	SS
APPROVED BY	D.ROLLINS
TITLE	ISO 14997 2nd SURFACE SCRATCH DIG MLA PLATE #2 ASSEMBLY
DATE	10/05/06
DRAWING NUMBER	110MLA0089-006
SHEET NUMBER	2 OF 2