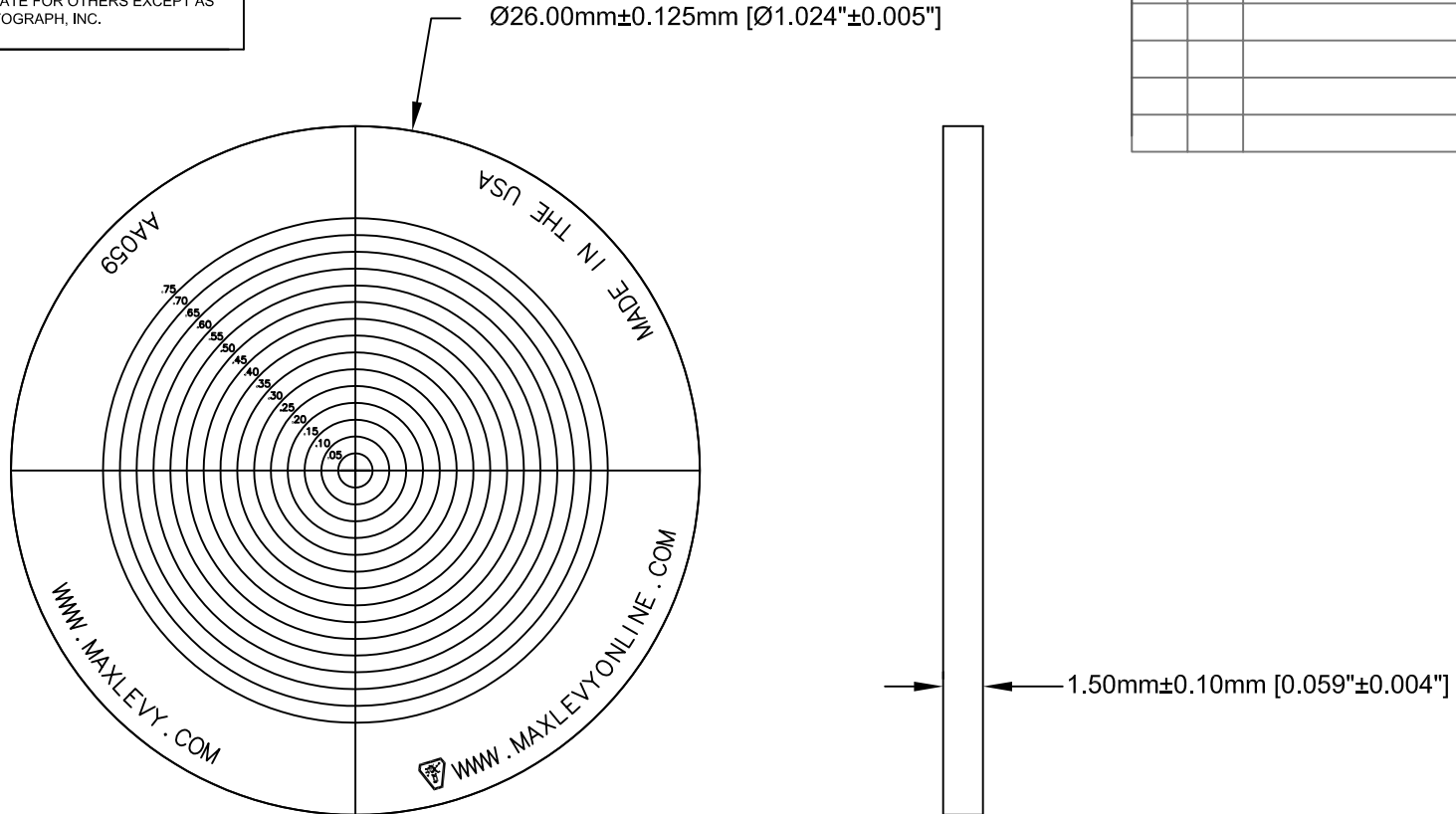


MAX LEVY AUTOGRAPH, INC. PROPRIETARY

THIS DRAWING CONTAINS CONFIDENTIAL PROPRIETARY INFORMATION THAT IS MAX LEVY AUTOGRAPH, INC. PROPERTY. DO NOT DISCLOSE NOR DUPLICATE FOR OTHERS EXCEPT AS AUTHORIZED BY MAX LEVY AUTOGRAPH, INC.

DATE	SYM	REVISION RECORD	AUTH	DR	CK
3/11/02	A	ADDED PATTERN DIA, & CHANGED TITLE	TEN		



NOTES:

1. BEVEL: REMOVE SHARP EDGES.
2. SURFACE FLATNESS: 3-4 WAVES
3. SURFACE QUALITY: SCRATCH:DIG 20:10 OVER ACTIVE AREA
4. PARALLELISM: < 30 ARCSEC
5. PATTERN OVERALL DIMENSIONAL ACCURACY: 0.00004" (0.001MM)
6. PATTERN TO BE CENTERED ON SUBSTRATE ±0.004" (±0.10MM)
7. PATTERN LINewidth IS 0.001" ±0.0001" (0.0254MM ±0.0025MM)
8. PATTERN ORIENTATION: RIGHT READING LOOKING THROUGH.
9. COATING: LOW REFLECTION CHROMIUM FIRST SURFACE. CHROMIUM ADHESION LAYER WITH A TOP LAYER OF CHROMIUM OXIDE, OPTICAL DENSITY > 3.0. COATING DESIGNED TO PROVIDE REFLECTION < 5% @ 550 NM
10. PATTERN: 15 CONCENTRIC CIRCLES CENTERED ON CROSSHAIR. 0 TO 0.75" IN 0.05" INCREMENTS
11. PACKAGING: BAG AND TAG PER 700MLA0060-001
12. PATTERN DIAMETER: 20.100MM

MLO PART NUMBER: AA059		ONLINE CATALOG RD2055	
TOLERANCES (EXCEPT AS NOTED)		MAX LEVY AUTOGRAPH	
DECIMAL .XXX= +/-,005 .XX= +/-,015 .X= +/-,030	MATERIAL SODA LIME GLASS	SCALE NONE	DRAWN BY TEN
FRACTIONAL +/-,030	TITLE CONCENTRIC CIRCLE 0.5" INCREMENTS / CROSSHAIR		
ANGULAR +/-0.5Deg.	DATE 01/09/01	DRAWING NUMBER 300MLA0069A-017	