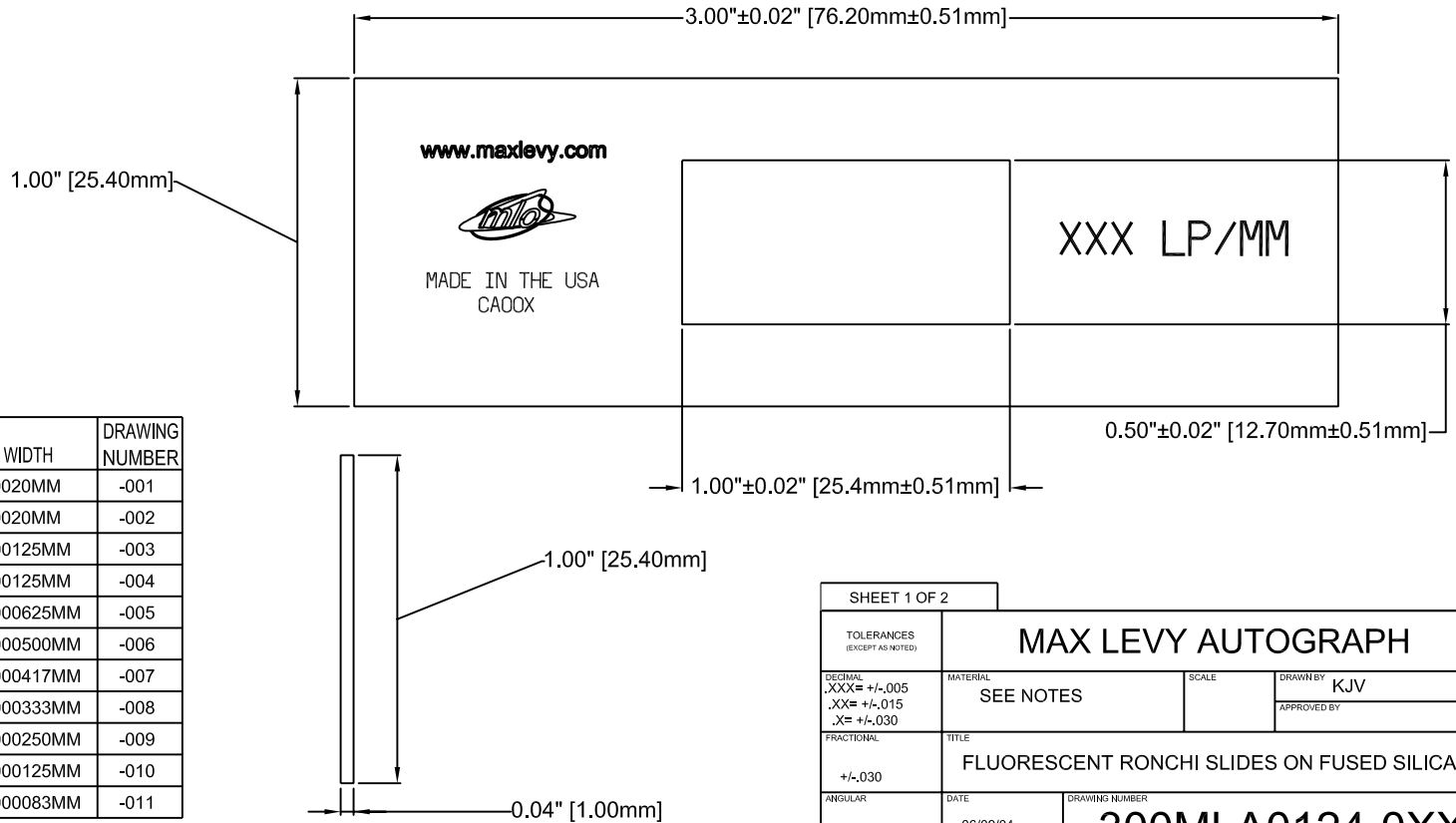


NOTES:

1. MATERIAL: 1.0MM NOMINAL THICK UV-GRADE FUSED SILICA WITH 0.1MM OF PHOSPHOROUS MATERIAL APPLIED TO SAME SIDE AS OF PATTERN
2. FLATNESS: 2 WAVES / INCH IN PATTERN AREA
3. OPTICAL QUALITY: SCRATCH/DIG 40/20
4. COATING: REFLECTIVE CHROMIUM SECOND SURFACE. OPTICAL DENSITY > 3.0. COATING DESIGNED TO PROVIDE REFLECTION 50% ±5% @ 550 NM. PHOSPHOROUS MATERIAL GLOWS UNDER ULTRAVIOLET LIGHT, PEAKING AT 365NM
5. EDGES: BREAK ALL SHARP EDGES. NO VISIBLE EDGE CHIPS > 0.25 MM DIAMETER
6. PATTERN TO BE CENTERED ON SUBSTRATE.
7. TARGET PACKAGED IN GARY PLASTIC CONTAINER PART NO. G-975 (3 7/8" X 1 15/16" X 1/2"), WRAPPED IN TISSUE, AND WITH TWO FOAM INSERTS.
8. LINE TO LINE PARALLELISM: < 2 ARCSEC
9. PARALLELISM: S1 TO S2 < 0.0005" / INCH (0.125 MM / 25.4 MM)

MAX LEVY AUTOGRAPH, INC. PROPRIETARY		DATE	SYM	REVISION RECORD	AUTH	DR	CK
THIS DRAWING CONTAINS CONFIDENTIAL PROPRIETARY INFORMATION THAT IS MAX LEVY AUTOGRAPH, INC. PROPERTY. DO NOT DISCLOSE NOR DUPLICATE FOR OTHERS EXCEPT AS AUTHORIZED BY MAX LEVY AUTOGRAPH, INC.		6-17-04	A	Updated Tolerance Table	KJV	A	
		1-29-05		New Logo	RSH		
		2-16-05		RESCALED AND DIMENSIONED	RSH		



MLA STOCK #	FREQUENCY	TOLERANCE		DRAWING NUMBER
		TRANSMISSION	LINE WIDTH	
CA012	5 LP/MM	50% ±1%	±0.0020MM	-001
CA013	10 LP/MM	50% ±2%	±0.0020MM	-002
CA014	20 LP/MM	50% ±2.5%	±0.00125MM	-003
CA015	40 LP/MM	50% ±5%	±0.00125MM	-004
CA016	80 LP/MM	50% ±5%	±0.000625MM	-005
CA017	100 LP/MM	50% ±5%	±0.000500MM	-006
CA018	120 LP/MM	50% ±5%	±0.000417MM	-007
CA019	150 LP/MM	50% ±5%	±0.000333MM	-008
CA020	200 LP/MM	50% ±5%	±0.000250MM	-009
CA021	400 LP/MM	50% ±5%	±0.000125MM	-010
CA022	600 LP/MM	50% ±5%	±0.000083MM	-011

SHEET 1 OF 2			
TOLERANCES (EXCEPT AS NOTED)	MAX LEVY AUTOGRAPH		
DECIMAL .XXX= +/-,005 .XX= +/-,015 .X= +/-,030	MATERIAL SEE NOTES	SCALE	DRAWN BY KJV
FRACTIONAL +/-,030	APPROVED BY		
ANGULAR +/-0.5Deg.	DATE 06/09/04	DRAWING NUMBER 300MLA0124-0XX	
TITLE FLUORESCENT RONCHI SLIDES ON FUSED SILICA			