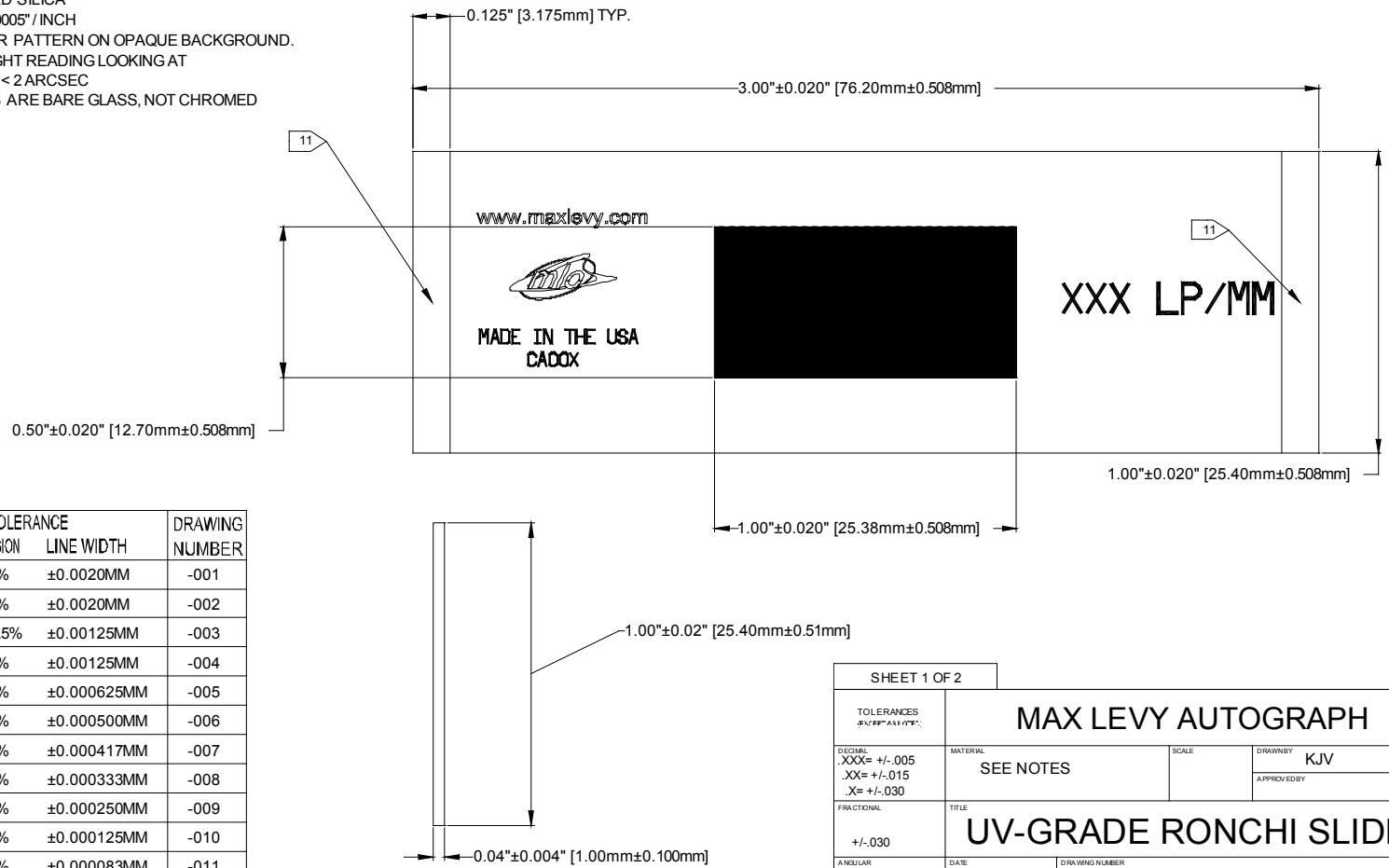


NOTES:

1. SUBSTRATE: 1.0MM(0.04") NOMINAL THICKNESS, FUSED SILICA.
2. COATING: REFLECTIVE CHROMIUM FIRST SURFACE. OPTICAL DENSITY > 3.0. COATING DESIGNED TO PROVIDE REFLECTION 50 % ±5% @ 550 NM.
3. SURFACE QUALITY: SCRATCH: DIG 20:10
4. FLATNESS: 2 WAVE / INCH
5. EDGES: BREAK SHARP EDGES. NO VISIBLE CHIPS > 0.25MM DIAMETER.
6. SUBSTRATE: UV-GRADE FUSED SILICA
7. PARALLELISM: S1 TO S2 < 0.0005" / INCH
8. POLARITY: NEGATIVE. CLEAR PATTERN ON OPAQUE BACKGROUND.
9. PATTERN ORIENTATION: RIGHT READING LOOKING AT
10. LINE TO LINE PARALLELISM: < 2 ARCSEC
11. 0.125" AREA ON SIDE EDGES ARE BARE GLASS, NOT CHROMED

MAX LEVY AUTOGRAPH, INC. PROPRIETARY		DATE	SYM	REVISION RECORD	AUTH	DR	CK
THIS DRAWING CONTAINS CONFIDENTIAL PROPRIETARY INFORMATION THAT IS MAX LEVY AUTOGRAPH, INC. PROPERTY. DO NOT DISCLOSE NOR DUPLICATE FOR OTHERS EXCEPT AS AUTHORIZED BY MAX LEVY AUTOGRAPH, INC.		2/16/05		RESCALE AND DIMENSION	RSH		



MLA STOCK #	FREQUENCY	TOLERANCE		DRAWING NUMBER
		TRANSMISSION	LINE WIDTH	
CA023	5 LP/MM	50% ±1%	±0.0020MM	-001
CA024	10 LP/MM	50% ±2%	±0.0020MM	-002
CA025	20 LP/MM	50% ±2.5%	±0.00125MM	-003
CA026	40 LP/MM	50% ±5%	±0.00125MM	-004
CA027	80 LP/MM	50% ±5%	±0.000625MM	-005
CA028	100 LP/MM	50% ±5%	±0.000500MM	-006
CA029	120 LP/MM	50% ±5%	±0.000417MM	-007
CA030	150 LP/MM	50% ±5%	±0.000333MM	-008
CA031	200 LP/MM	50% ±5%	±0.000250MM	-009
CA032	400 LP/MM	50% ±5%	±0.000125MM	-010
CA033	600 LP/MM	50% ±5%	±0.000083MM	-011

SHEET 1 OF 2			
TOLERANCES (UNLESS OTHERWISE SPECIFIED):		MAX LEVY AUTOGRAPH	
DECIMAL .XXX= +/- .005 .XX= +/- .015 .X= +/- .030	MATERIAL SEE NOTES	SCALE	DRAWN BY KJV
FRACTIONAL +/- .030	TITLE UV-GRADE RONCHI SLIDES	APPROVED BY	
ANGULAR +/- 0.5Deg.	DATE 07/14/04	DRAWING NUMBER 300MLA0110-0XX	