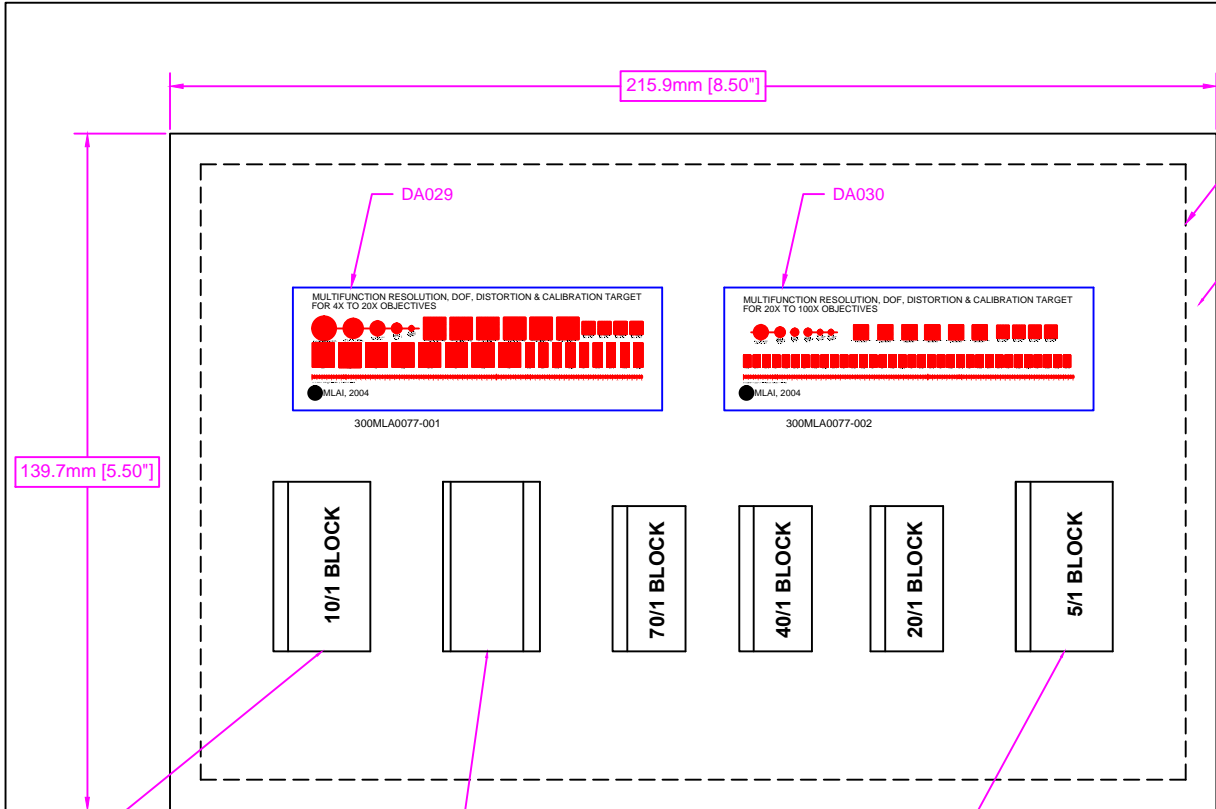


| DATE | SYM | REVISION RECORD | AUTH | CHK | OK |
|---------|-----|--|----------|-----|----|
| 2-10-02 | A | UPDATED COPYRIGHT INFORMATION | M.S. | | |
| 2-11-02 | B | REWORKED FORMS AND PACKING ARRANGEMENT | M.S. | | |
| 2-12-12 | C | REFER TO ECC 54 | I.D.S.N. | | |
| | | | | | |



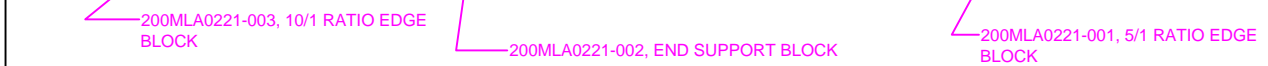
USER INSTRUCTION CARD (700MLA0067-001)

FOAM INSERT, CASE

NOTES:

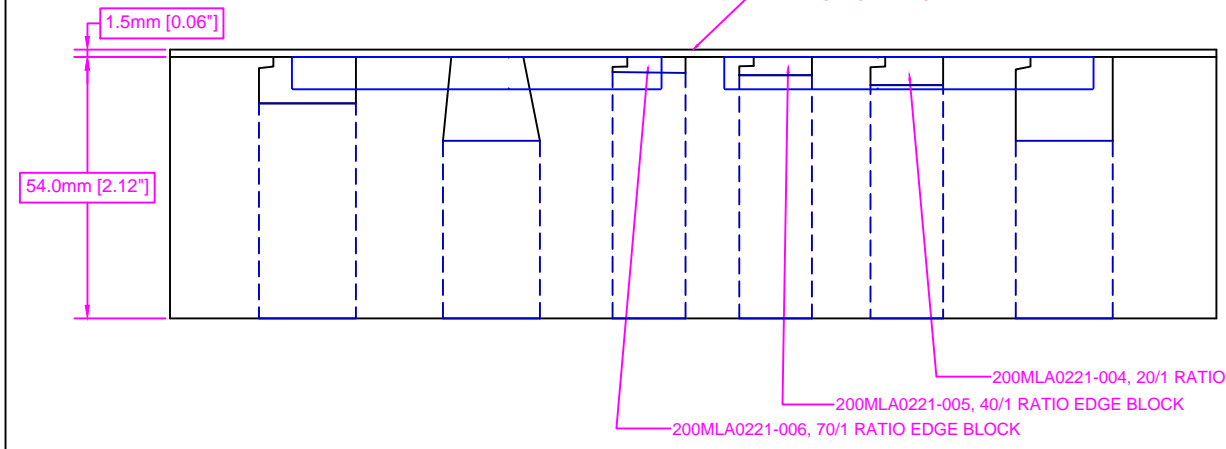
THE COMPLETE MULTIFUNCTION RESOLUTION, DOF, DISTORTION & CALIBRATION TARGET CONSISTS OF THE FOLLOWING COMPONENTS:

1. THE 300MLA0077-001 (DA029) MULTIFUNCTION TARGET FOR 4X INSTRUMENT GRADE TO 20X OBJECTIVE LENSES
2. THE 300MLA0077-002 (DA030) MULTIFUNCTION TARGET FOR 20X INSTRUMENT GRADE TO 100X OBJECTIVE LENSES
3. THE 200MLA0221-001 5/1 RATIO EDGE BLOCK
4. THE 200MLA0221-002 END SUPPORT BLOCK
5. THE 200MLA0221-003 10/1 RATIO EDGE BLOCK
6. THE 200MLA0221-004 20/1 RATIO EDGE BLOCK
7. THE 200MLA0221-005 40/1 RATIO EDGE BLOCK
8. THE 200MLA0221-006 70/1 RATIO EDGE BLOCK
9. USER INSTRUCTION DATA, INCLUDING MTF CALCULATION AND ANALYSIS SOFTWARE AS CONTAINED ON ONE CD ROM
10. THE USER INSTRUCTION CARD (700MLA0067-001)
11. STORAGE CASE (PACKATEERS, P/N: #095065, 6.5"X9.5"X3"), INCLUDING PROTECTIVE FOAM INSERTS



P/N : DA031
P/N: DA029 Multifunction Target 4X-20X &
P/N: DA030 Multifunction Target 20X-100X
DA029 S/N: XXXX, DA030 S/N: XXXX

DECAL TO BE AFFIXED TO LID OF CASE



MAX LEVY AUTOGRAPH, INC. PROPRIETARY
THIS DRAWING CONTAINS CONFIDENTIAL PROPRIETARY INFORMATION THAT IS MAX LEVY AUTOGRAPH, INC. PROPERTY. DO NOT DISCLOSE TO NOR DUPLICATE FOR OTHERS EXCEPT AS AUTHORIZED BY MAX LEVY AUTOGRAPH, INC.

| | | | |
|---|-----------------|----------------------------------|----------------------|
| SHEET 1 OF 1 | | 4X TO 20X OBJECTIVE RANGE | |
| METRIC TOLERANCES (EXCEPT AS NOTED) | | MAX LEVY AUTOGRAPH | |
| DECIMAL XXX± ±.025 XX± ±.10 .X± ±.25 | MATERIAL | SCALE NONE | DRAWN BY I.D.S.N. |
| FRAC TIONAL | | APPROVED BY | |
| MULTIFUNCTION TARGET | | | |
| REGULAR | DATE 2/12/16 | DRAWING NUMBER 100MLA0166-001 | |
| ±0.5Deg. | | | |