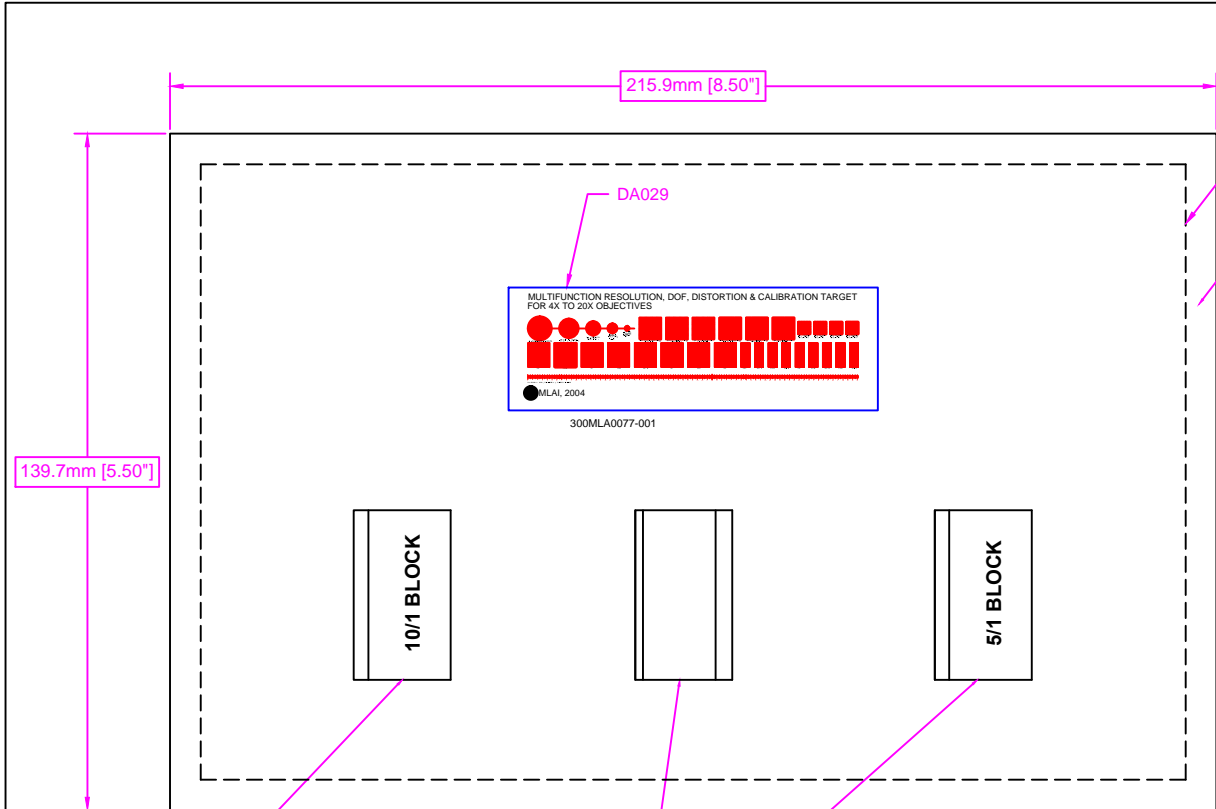


DATE	SYM	REVISION RECORD	AUTH	CHK	OK
12-15-01	A	UPDATED COPYRIGHT INFORMATION	M.S.		
12-11-01	B	REVISED FRONT END AND PACKING ARRANGEMENT	M.S.		
12-12-01	C	REFER TO EDD 02	I.D.S.M.		

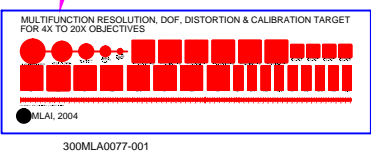


USER INSTRUCTION CARD (700MLA0067-001)

FOAM INSERT, CASE

NOTES:

- THE COMPLETE MULTIFUNCTION RESOLUTION, DOF, DISTORTION & CALIBRATION TARGET CONSISTS OF THE FOLLOWING COMPONENTS:
1. THE 300MLA0077-001 (DA029) MULTIFUNCTION TARGET FOR 4X INSTRUMENT GRADE TO 20X OBJECTIVE LENSES
 2. THE 200MLA0221-001 5/1 RATIO EDGE BLOCK
 3. THE 200MLA0221-002 END SUPPORT BLOCK
 4. THE 200MLA0221-003 10/1 RATIO EDGE BLOCK
 5. USER INSTRUCTION DATA, INCLUDING MTF CALCULATION AND ANALYSIS SOFTWARE AS CONTAINED ON ONE CD ROM
 6. THE USER INSTRUCTION CARD (700MLA0067-001)
 7. STORAGE CASE (PACKATEERS, P/N: #095065, 6.5"x9.5"x3"), INCLUDING PROTECTIVE FOAM INSERTS



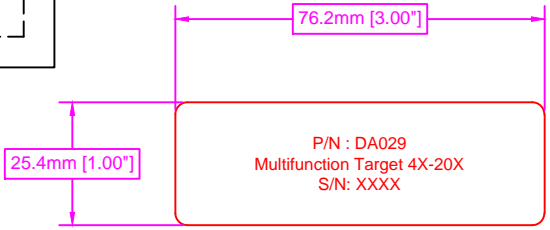
10/1 BLOCK

200MLA0221-001, 5/1 RATIO EDGE BLOCK

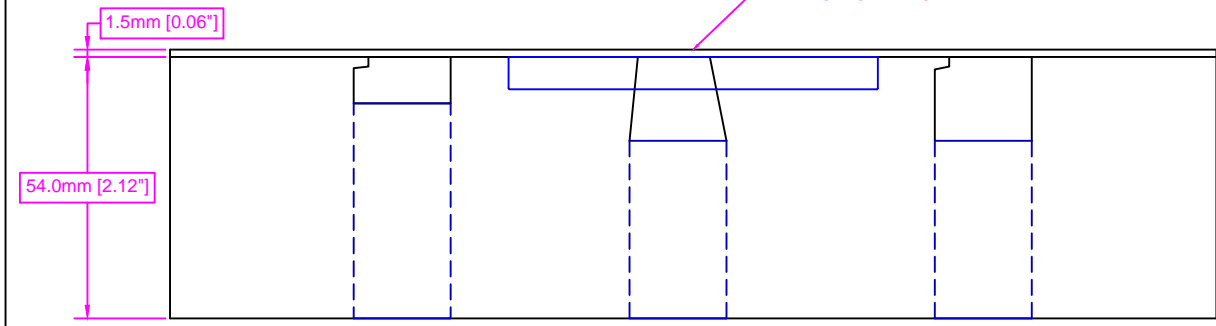
5/1 BLOCK

200MLA0221-003, 10/1 RATIO EDGE BLOCK

200MLA0221-002, END SUPPORT BLOCK



DECAL TO BE AFFIXED TO LID OF CASE



MAX LEVY AUTOGRAPH, INC. PROPRIETARY
 THIS DRAWING CONTAINS CONFIDENTIAL PROPRIETARY INFORMATION THAT IS MAX LEVY AUTOGRAPH, INC. PROPERTY. DO NOT DISCLOSE TO NOR DUPLICATE FOR OTHERS EXCEPT AS AUTHORIZED BY MAX LEVY AUTOGRAPH, INC.

SHEET 1 OF 1 4X TO 20X OBJECTIVE RANGE			
METRIC TOLERANCES (EXCEPT AS NOTED)		MAX LEVY AUTOGRAPH	
NORMAL XXX± ±0.025 XX± ±0.10 X± ±0.25	MATERIAL	SCALE NONE	DRAWN BY D.S.
FRAC TIONAL		APPROVED BY	
MULTIFUNCTION TARGET			
REGULAR	DATE 9/17/01	DRAWING NUMBER 100MLA0160-001	
±0.5Deg.			