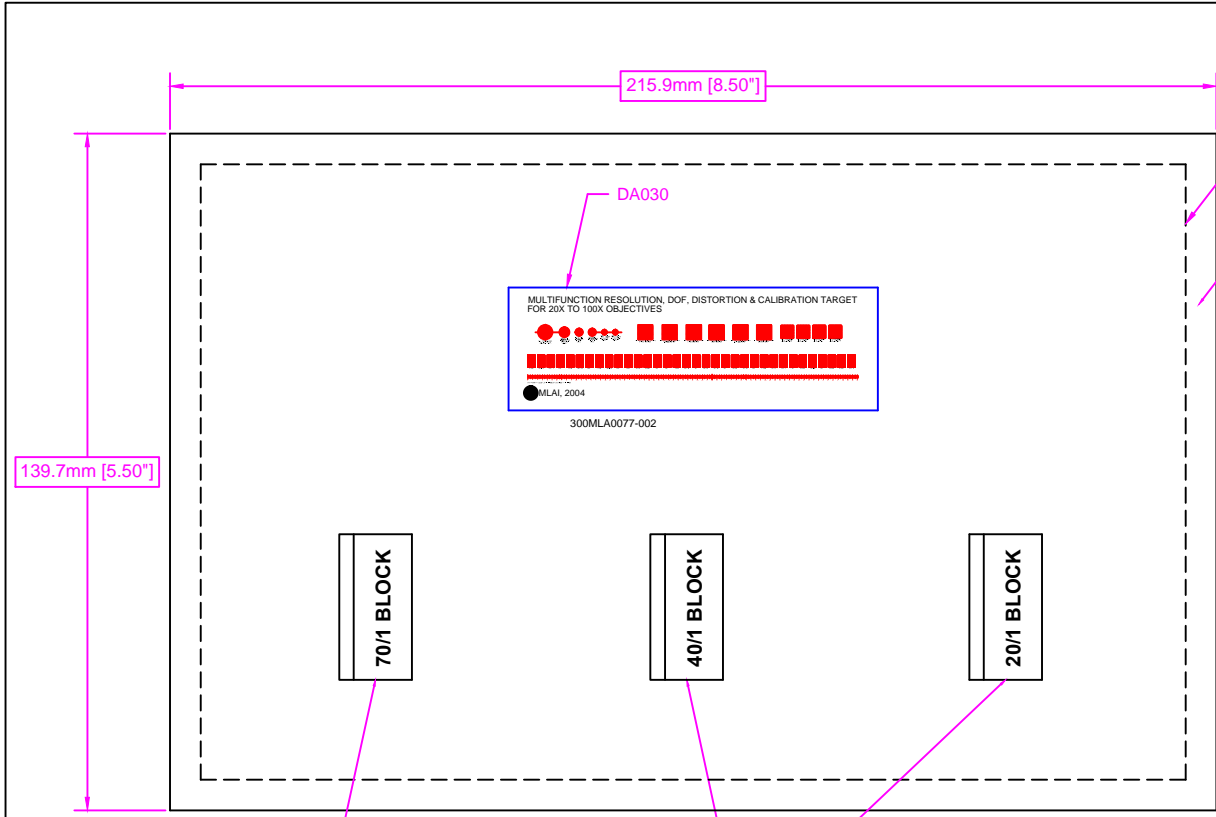


DATE	SYM	REVISION RECORD	AUTH	CHK	OK
12-10-01	A	UPDATED COPYRIGHT INFORMATION	M.S.		
12-11-01	B	PERFORMED FORMER SERIAL PACKING ARRANGEMENT	M.S.		
12-12-10	C	REFER TO EDD 03	I.D.S.N.		



USER INSTRUCTION CARD (700MLA0067-001)

FOAM INSERT, CASE

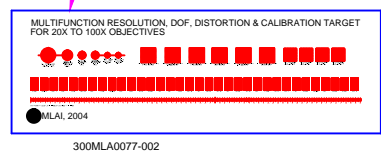
NOTES:

- THE COMPLETE MULTIFUNCTION RESOLUTION, DOF, DISTORTION & CALIBRATION TARGET CONSISTS OF THE FOLLOWING COMPONENTS:
1. THE 300MLA0077-002 (DA030) MULTIFUNCTION TARGET FOR 20X INSTRUMENT GRADE TO 100X OBJECTIVE LENSES
 2. THE 200MLA0221-004 20/1 RATIO EDGE BLOCK
 3. THE 200MLA0221-005 40/1 RATIO EDGE BLOCK
 4. THE 200MLA0221-006 70/1 RATIO EDGE BLOCK
 5. USER INSTRUCTION DATA, INCLUDING MTF CALCULATION AND ANALYSIS SOFTWARE AS CONTAINED ON ONE CD ROM
 6. THE USER INSTRUCTION CARD (700MLA0067-001)
 7. STORAGE CASE (PACKATEERS, P/N: #095065, 6.5\"X9.5\"X3\"), INCLUDING PROTECTIVE FOAM INSERTS

139.7mm [5.50\"]

215.9mm [8.50\"]

DA030



70/1 BLOCK

40/1 BLOCK

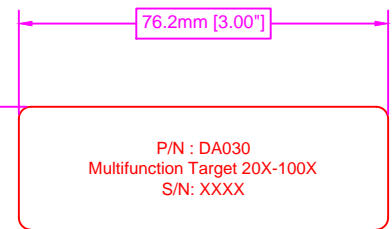
20/1 BLOCK

200MLA0221-006, 70/1 RATIO EDGE BLOCK

200MLA0221-005, 40/1 RATIO EDGE BLOCK

200MLA0221-004, 20/1 RATIO EDGE BLOCK

25.4mm [1.00\"]

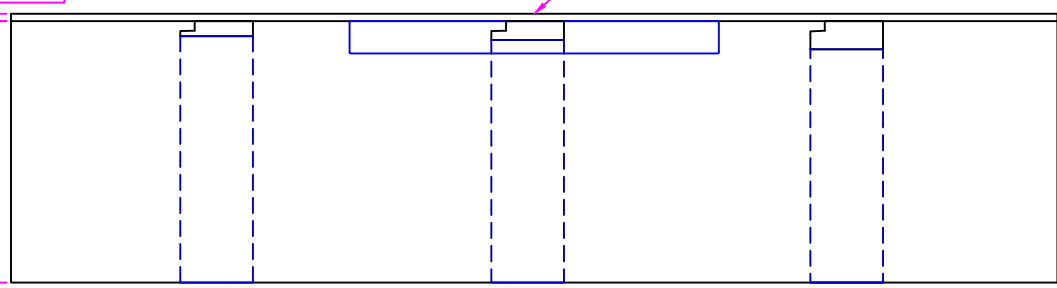


DECAL TO BE AFFIXED TO LID OF CASE

PROTECTIVE FOAM

1.5mm [0.06\"]

54.0mm [2.12\"]



MAX LEVY AUTOGRAPH, INC. PROPRIETARY

THIS DRAWING CONTAINS CONFIDENTIAL PROPRIETARY INFORMATION THAT IS MAX LEVY AUTOGRAPH, INC. PROPERTY. DO NOT DISCLOSE TO NOR DUPLICATE FOR OTHERS EXCEPT AS AUTHORIZED BY MAX LEVY AUTOGRAPH, INC.

SHEET 1 OF 1		20X TO 100X OBJECTIVE RANGE	
METRIC TOLERANCES (EXCEPT AS NOTED)		MAX LEVY AUTOGRAPH	
NORMAL	XXX± ±0.025	SCALE	NONE
	XX± ±0.10	DRAWN BY	D.S.
	.X± ±0.25	APPROVED BY	
FRAC TIONAL		MULTIFUNCTION TARGET	
ANGULAR	DATE	DRAWING NUMBER	
±0.5Deg.	9/17/01	100MLA0161-001	